

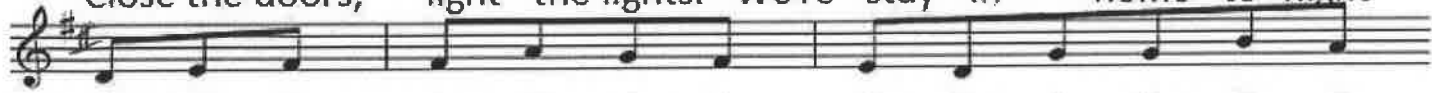
IND! D>C

A World Of Our Own Tin Whistle Sheet Music

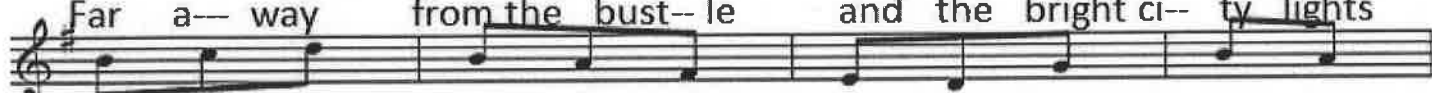
Words and music by Tom Springfield



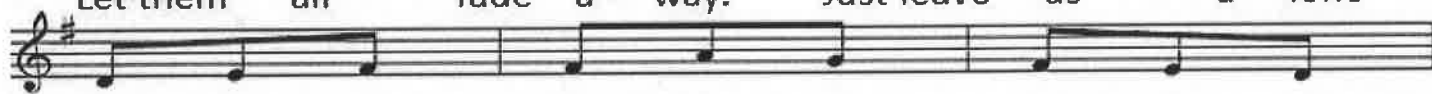
Close the doors, light the lights. We're stay-in' home to-night



Far a-way from the bust-le and the bright ci-ty lights



Let them all fade a-way. Just leave us a-lone



And we'll live in a world of our own



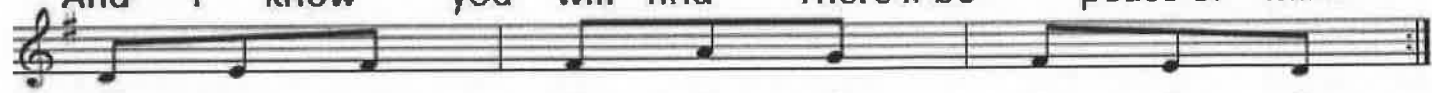
We'll build a world of our own That no one else can share



All our sorr-ows we'll leave far be-hind us there.



And I know you will find There'll be peace of mind



When we live in a world of our own



576